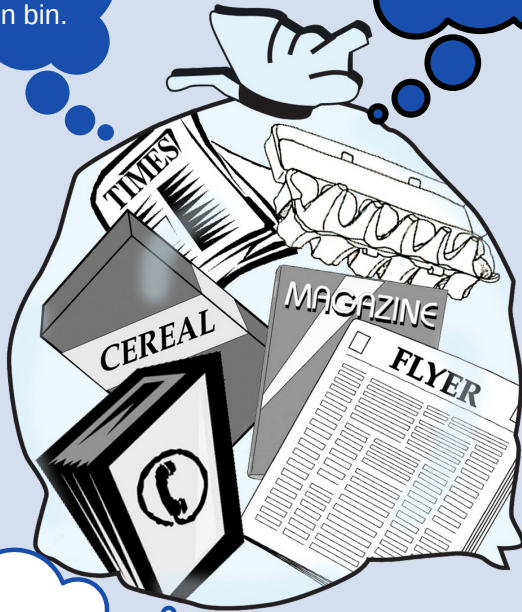


# Two-Bag Recycling

Hi! I'm  
**BLUE BAG#1**

If I am soiled,  
please put me in  
the green bin.



Milk carton:  
"yay! I am in the  
right bag"

Hi! I'm  
**BLUE BAG#2**



No kleenex  
please!

Thank you for  
making sure we're  
clean before  
recycling us!

Recyclables must be in TWO separate transparent **BLUE BAGS** to be picked up curbside.



Tel: (902) 742-1312 or Toll free: 1-800-569-0039

Email: [info@wastecheck.ca](mailto:info@wastecheck.ca)

Website: [www.wastecheck.com](http://www.wastecheck.com)

Follow Waste Check on

