

The background is a solid teal color with a subtle, wavy pattern that resembles the surface of water or sand dunes. The text is centered and rendered in a clean, white, sans-serif font.

Argyle's

Business Park on the Sea



We received funding from our Province for Research and Development













AQUAREAD
GPS
TEMP: 15.18 °C
DRP: +0.00 m
MH: 1.87 m
GPS: 46.55 °N
AQUAREAD
GPS: 12.05 °E

MENU

ESC

OK

M+

M-

AQUAREAD

AQUAREAD

AQUAREAD

AQUAREAD

AQUAREAD



MOU - Memorandum of
Understanding between
Argyle & Province



First of its kind in
CANADA

Aquaculture Development Area

- What is an ADA?
- It is an area of water, that has been identified following a thorough assessment, as an area suitable for aquaculture and will be pre-approved for specific types of aquaculture.
- In our case, for shellfish and marine plants.

Steering committee

Purpose is to manage the ADA planning process.

- Municipality of the District of Argyle
- NSDFA – Nova Scotia Dept of Fisheries and Aquaculture
- CMAR – Centre for Marine Applied Research
- Department of Fisheries and Oceans

Stakeholder Committee

Purpose is to provide support in the engagement, including First Nations and network partners.

Municipality of the District of Argyle

NSDFA – Nova Scotia Dept of Fisheries and Aquaculture

CMAR – Centre for Marine Applied Research

Industry committee members (Lobster and aquaculture farmers)

Members of the Public

Data Committee

Purpose is to provide support on all things related to data, including data collected through the stakeholder engagements.

Municipality of the District of Argyle

NSDFA – Nova Scotia Dept of Fisheries and Aquaculture

CMAR – Centre for Marine Applied Research

Department of Fisheries and Oceans

Dalhousie University

The project involves the following 12 provincial and federal departments:

Nova Scotia Environment

Nova Scotia Agriculture

Nova Scotia Municipal Affairs and Housing

Nova Scotia Office of Aboriginal Affairs

Nova Scotia Department of Lands and Forestry

Nova Scotia Transportation Infrastructure & Renewal

Nova Scotia Energy and Mines

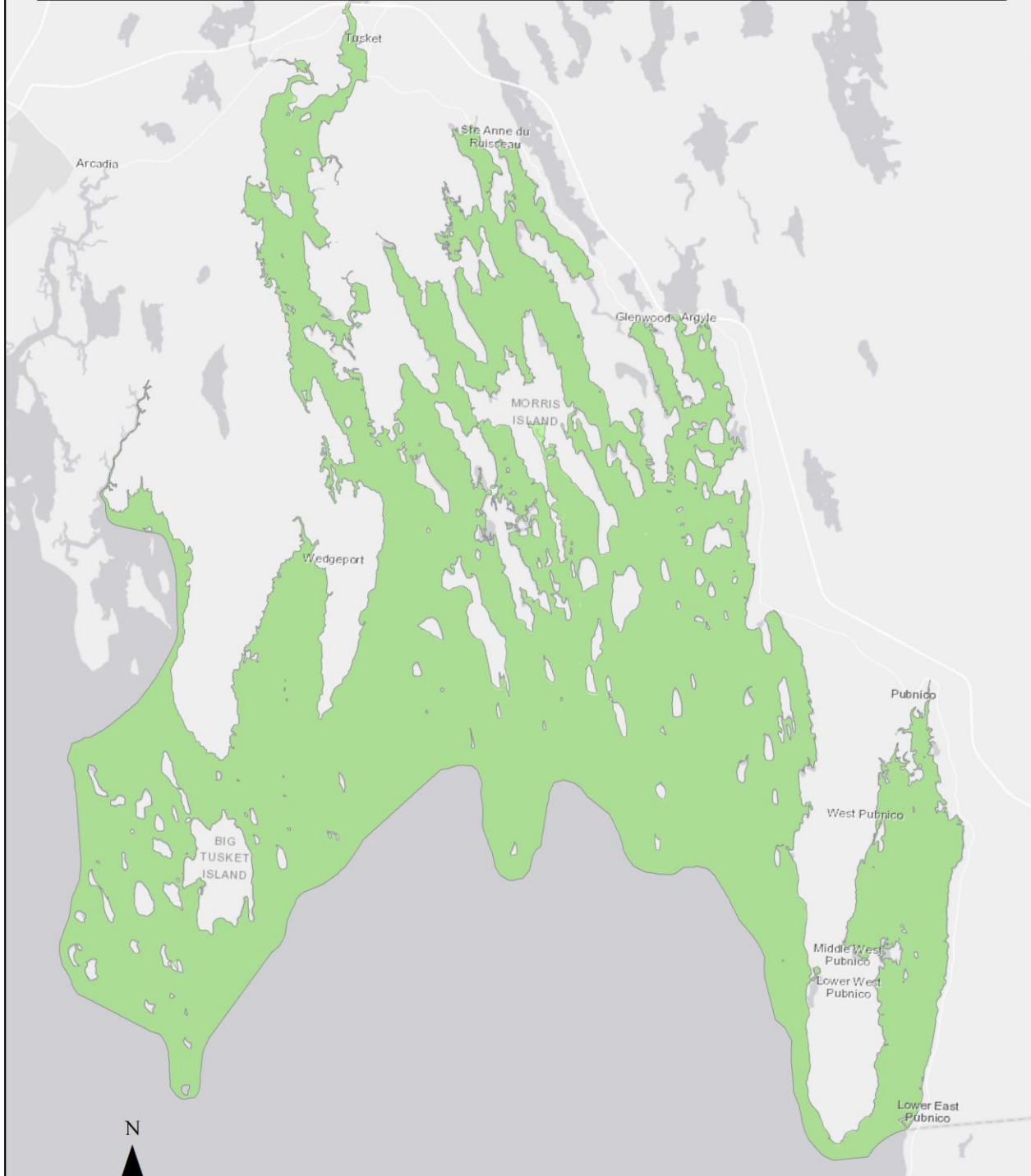
Nova Scotia Community Culture and Heritage

Fisheries and Oceans Canada

Canadian Food Inspection Agency

Transport Canada

Environment & Climate Change Canada



FACTORS CONSIDERED FOR SITE SELECTION



NAVIGATION



FISHER PEOPLE AND
ROCKWEEDERS



SHELTER



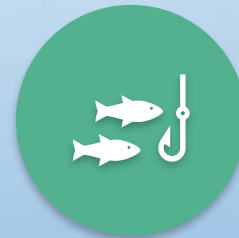
PROXIMITY TO
HOMES



PROXIMITY TO
WHARVES



INDIGENOUS
PEOPLE



RECREATIONAL
BOATERS



WATER QUALITY
& DATA

Primary Productivity

with the assistance of
professor Ramon Filgueiras
of Dalhousie University











Primary Productivity

- Camp Cove Wharf
- Indian Sluice
- Argyle River
- Pubnico Harbour





simply paper
paper simply
PREMIUM
simply paper
paper simply
simply paper
paper simply

simply paper
paper simply
simply paper
paper simply
simply paper
paper simply

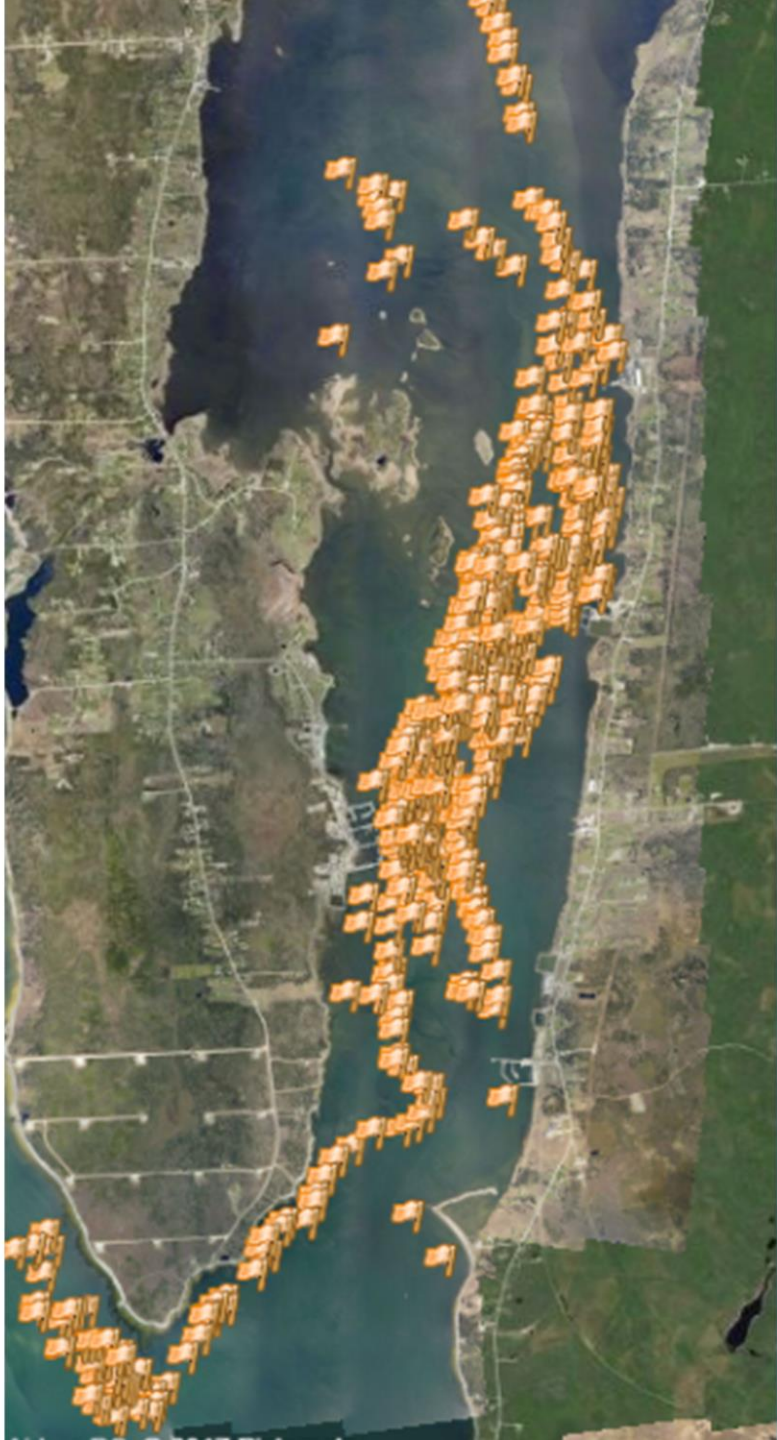
20
100 per
e Sc
ation Vials

PRESSURE
SIDE ONLY

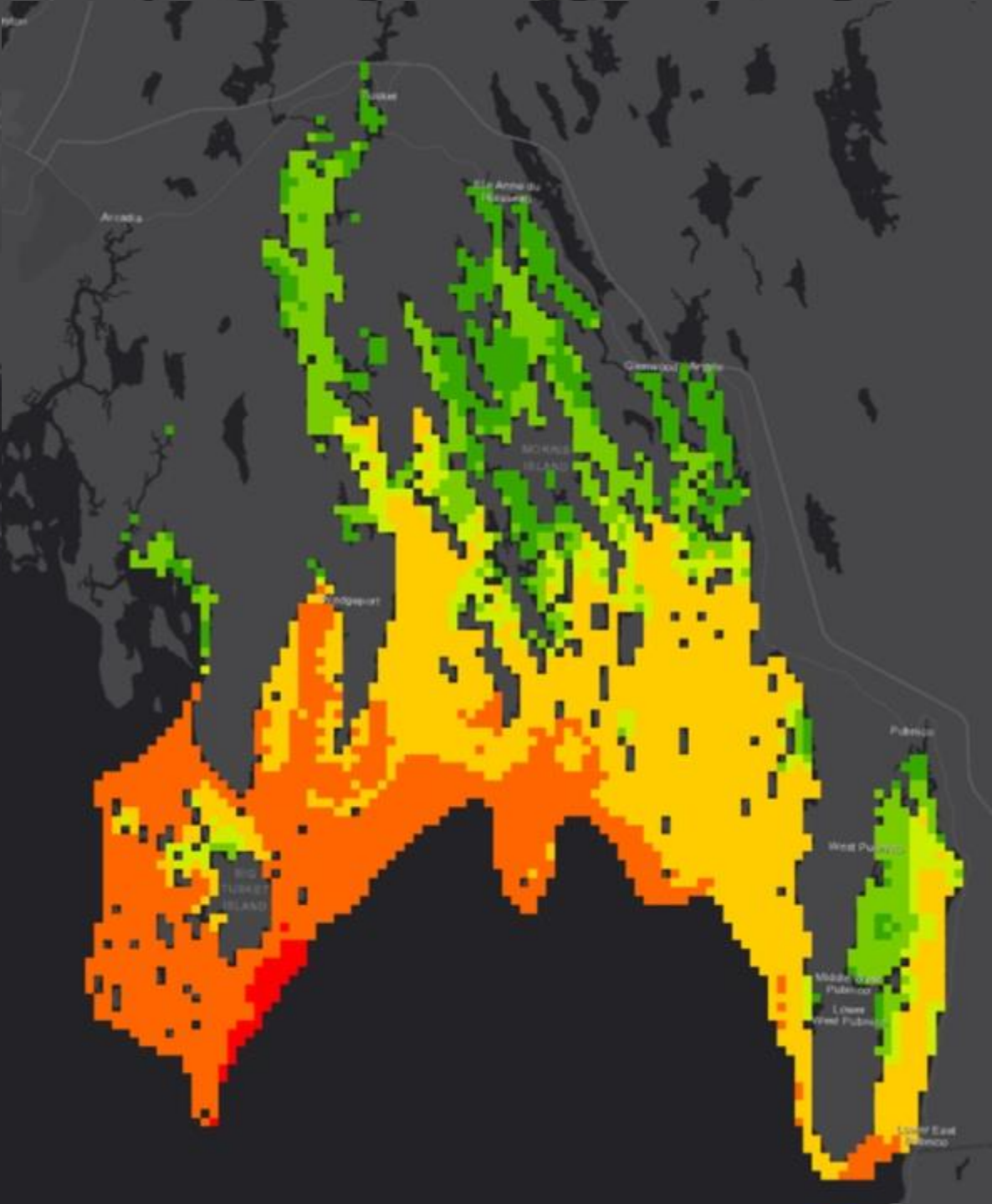
FALL Pall Corporation

Example Datasets for our Analysis

Lobster Buoys



Wind and Wave Atlas

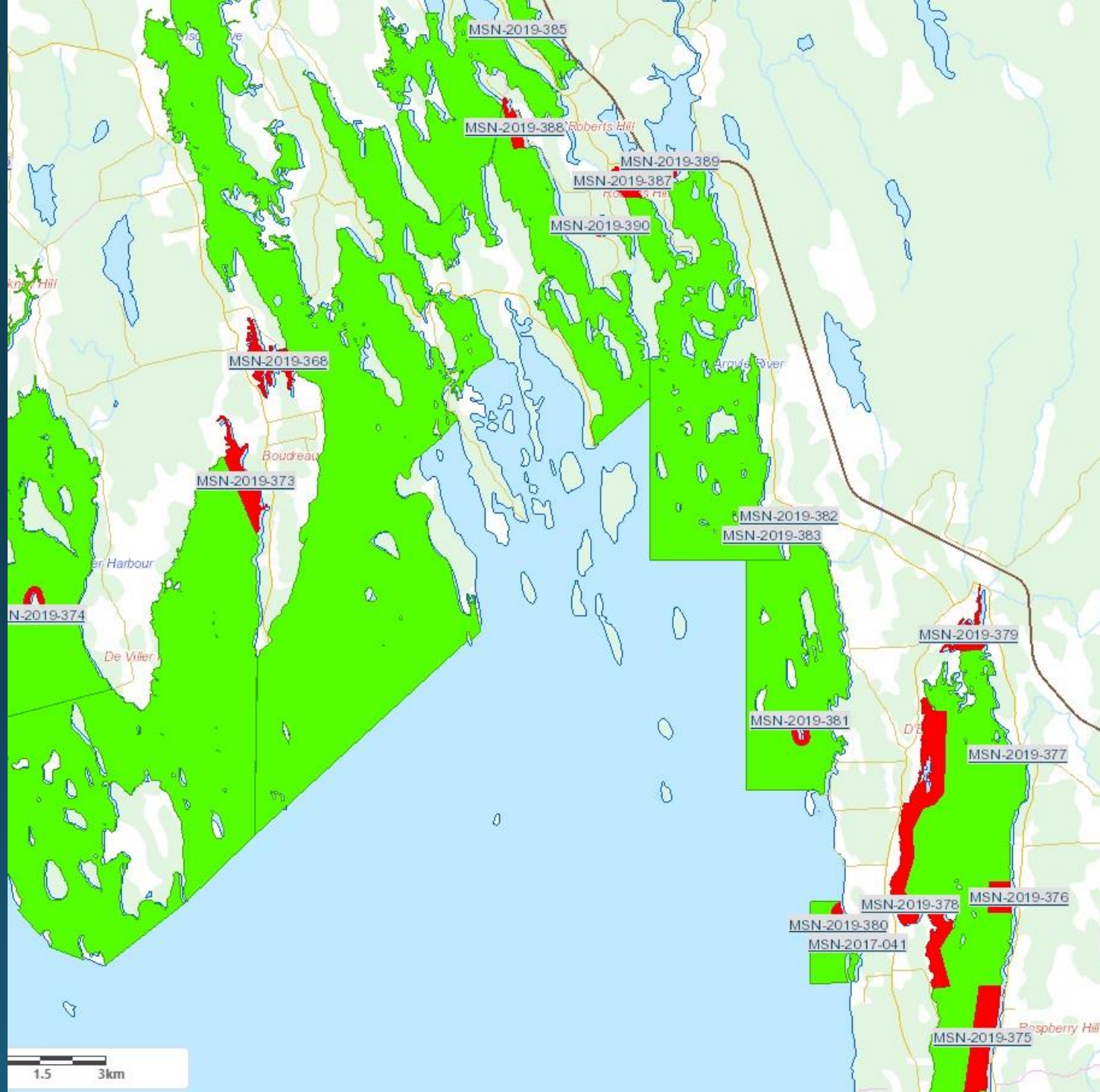




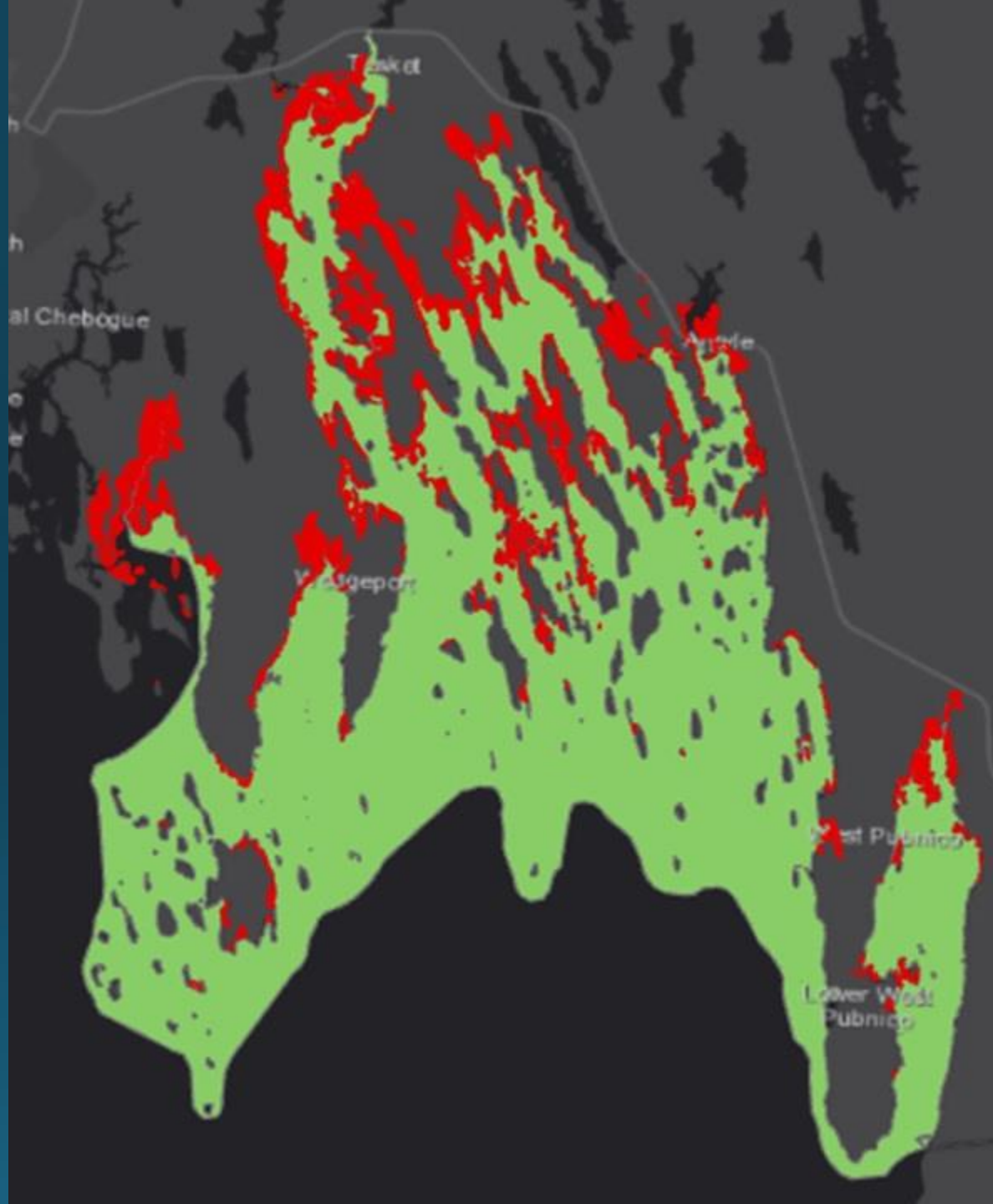
Ship Traffic (AIS)



Shellfish Classification



Special and Significant Wetlands





Go-Pro
underwater footage







Eel Grass and the ADA





Questions?

www.aquacultureargyle.com